

MONTHLY MEMBERSHIP PROGRESS REPORT

LOCATION CALIFORNIA

District 4 C1

Results as of: 10/31/2022

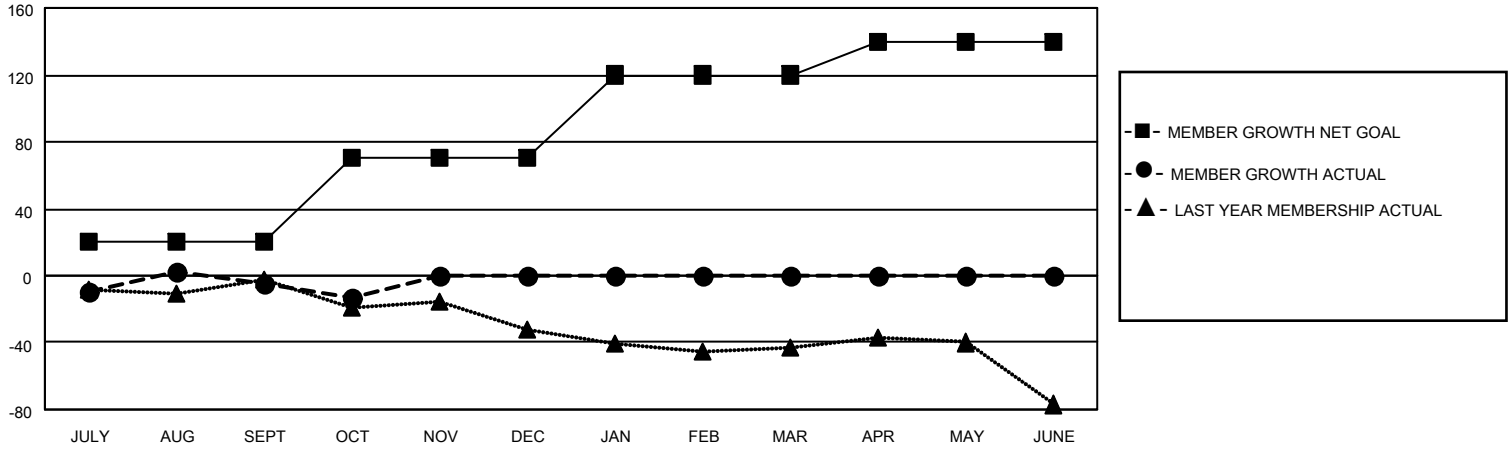
Clubs			
RESULTS FOR 2022-2023			
QUARTER	NEW CLUB GOAL	NEW CLUBS	DROPPED CLUBS
JULY/AUG/SEPT	1	0	0
OCT/NOV/DEC	1	0	0
JAN/FEB/MAR	1	0	0
APR/MAY/JUNE	1	0	0

Members			
RESULTS FOR 2022-2023			
QUARTER	MEMBER GROWTH NET GOAL	MEMBER GROWTH ACTUAL	DROPPED MEMBERS ACTUAL (including transfers)
JULY/AUG/SEPT	20	36	40
OCT/NOV/DEC	50	5	12
JAN/FEB/MAR	50	0	0
APR/MAY/JUNE	20	0	0

GOALS AND ACTUAL NEW CLUBS CUMULATIVE



GOALS AND ACTUAL MEMBERS CUMULATIVE



DROPPED CLUBS: 0

15 CLUBS OF 36 ADDED 1 OR MORE NEW MEMBERS

GENDER DISTRIBUTION

MALE	566 (64.17%)
FEMALE	316 (35.83%)
NON BINARY	0 (0.00%)
PREFER NOT TO ANSWER	0 (0.00%)

DROPPED MEMBERS

[CLICK HERE FOR CUMULATIVE MEMBERSHIP DATA](#)

DECEASED	6
CLUB CANCELLED	0
OTHER	46
TOTAL	52

TOTAL FAMILY UNIT MEMBERS	173
FAMILY MEMBERS PAYING HALF DUES	89